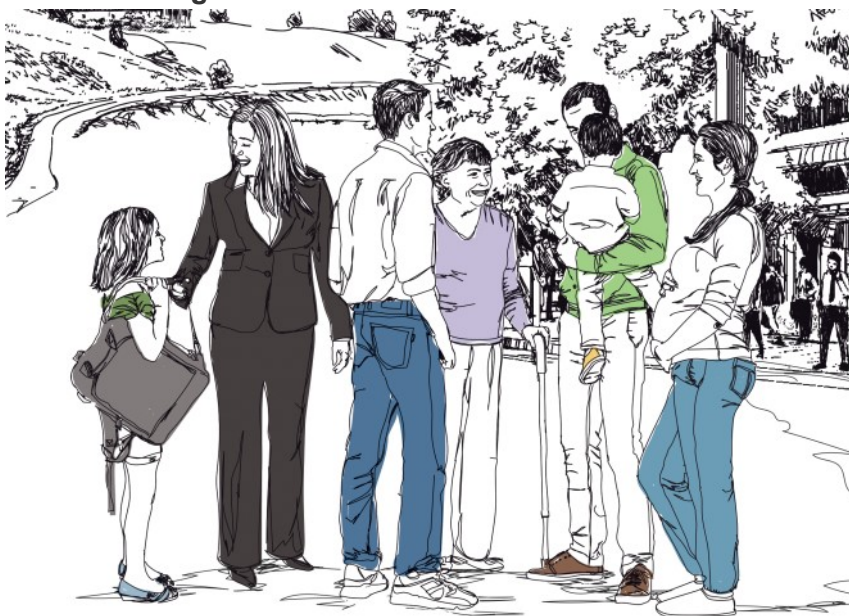


Services Offered

CLSC de Berthierville

Centre intégré de santé et de services sociaux de Lanaudière



450 836-7011

Toll free : 450 752-2434

761, rue Notre-Dame
Berthierville (Québec)
J0K 1A0

Québec 

Services offered by the CLSC

IMPORTANT | Certains termes et conditions concernant les services offerts aux CLSCs peuvent être sujets à changement.

Avant de voyager, il est préférable de vérifier avec le CLSC.

Contact your CLSC at 450 836-7011.

When you call the CLSC, please :

- Have your health insurance card handy
- Explain your situation accurately



Health Services

- Do you have a health problem?
- Do you need assistance or follow-up after a surgery?
- Do you need follow-up treatments because of your health condition?

Services offered - By appointments :

- Sampling collection/testing (blood tests, glucose, xylose, lactose tests, urine tests, etc.) www.clicsante.ca - 1 833 991-2663
- Nursing care (bandaging, injections, teaching, etc.)
- Adult vaccination clinic: www.clicsante.ca
- Screening tests for STIs/Birth control : 450 836-7011 ext. 0
- Smoking Cessation Centre : 450 755-2111 poste 422313 or cea-cat.nord.cissslan@ssss.gouv.qc.ca



Home Support Services

- Is your **autonomy limited** or are you **unable to get around easily** because of your health condition?
- Do you need **temporary assistance** at home?

Contact the home support reception service at 450 757-2572 (450 757-CLSC) or 1 866 757-2572.

Services offered :

- Home care assistance (personal hygiene, meals, etc.)
- Help and support for people with disabilities
- Fall prevention program
- In-home nursing care following surgery or a hospital stay, or in cases of chronic disease
- Self-treatment teaching and follow-up
- Respiratory therapy, occupational therapy, physical rehabilitation services, dietitian services, etc.
- In-home social services (coping with an illness, assessing residential services or protection plans, negligence or violence against an elderly person, etc.)
- Day Centre (nursing care, social or rehabilitation services, group activities and respite care)
- Home adaptation assessment
- Equipment loans (wheelchair, walker, hospital bed, etc.)
- Material assistance program for people with disabilities
- Direct allowance program for home care assistance and respite care
- Palliative care assistance and support



Children, Youth and Family Services

- Are you preparing for the **birth of a child**?
- Is your **child's development** worrying you?
- Does your child's **health** require monitoring?
- Are you questioning your **skills** or your **abilities as a parent**?

Services offered :

- Vaccination
- Prenatal meeting
- Postnatal visits
- Breastfeeding support
- Preventive dental hygiene services
- Support for families of children with disabilities and respite care
- OLO Program (egg-milk-orange)
- Integrated Perinatal and Early Childhood Services Program (Programme SIPPE in French)
- Psychosocial services to youngsters in difficulty and their families/Youth mental health services

Other services offered by the CISSS



811 Info-Santé / Info-Social / GAP

Info-Santé : are you concerned with your physical health dial **811 ext.1**

Info-Social : if you, or a loved one, are experiencing various psychosocial difficulties dial **811 ext. 2**

GAP : for orphaned patients wishing to obtain an appointment with a healthcare professional **GAP.soinsvirtuels.gouv.qc.ca** or dial **811 ext. 3**



**This service is confidential and accessible
24 hours a day 7 days a week.**

Services offered :

Sound advice and referral to key resources.



Health Services

Services offered :

- Abortion clinic: (CLSC de Joliette) : 450 755-2111, ext. 422418
- Asthma Instructional Centre : (Centre hospitalier De Lanaudière) : 450 759-8222, ext. 2792
- Smoking Cessation Centre (CLSC de Joliette) : 450 755-2111 poste 422313 or cea-cat.nord.cissslان@ssss.gouv.qc.ca



Mental Health and Psychosocial Services

- Are you or is a loved one:
 - ♦ Struggling to **overcome a trying ordeal** (major turning point in life, death of a loved one, separation, fire or natural disaster, etc.)?
 - ♦ Having **trouble at work**, with your personal **finances, housing, etc.**?
 - ♦ Having **mood changes** (depression, anxiety, anger, irritability, fear) that affect your ability to function?
- Does your child have **behaviour** or **adaptation problems**?

Dial 811, option 2 to contact Info-Social.

Services Offered - Adult:

- Initial meeting, assessment, orientation and referrals
- Psychosocial services by appointment for personal or family problems, relationship issues, crisis situation, etc.
- Alcochoix



Services in the Fields of Intellectual or Physical Disabilities and Autism Spectrum Disorders

- Are you, your child or a loved one having **problems** related to your **disability** or **difficulties**?
- Do you think your child may have a **developmental delay**?

Contact the centralized ID-PD-ASD reception service at 1 877 322-2898 or guichet.ditsadp.cissslان@sss.gouv.qc.ca.



Addiction Rehabilitation Centre

Are you suffering from **substance abuse, alcoholism** or **compulsive gambling**?

Contact the centre nearest you:

- Joliette : 450 755-6655
- Charlemagne : 450 657-0071
- Terrebonne : 450 492-7444

Quebec Family Doctor Finder

You don't have a **family doctor**? Register now.

- Online: www.gamf.gouv.qc.ca
- By telephone: 1 833 755-4263 (GAMF)

Service Quality and Complaints Commissioner

450 759-5333 or 1 800 229-1152, ext. 2133

Email: plaintes.cissslan@ssss.gouv.qc.ca

CISSS de Lanaudière Users Committee

450 759-5825 or 1 833 649-5733 (voicemail)

Email: cucilanaudiere@gmail.com

Transport/Support services offered by our partners

Service de transport adapté de la MRC de D'Au-tray :
450 835-9711 or 1 877 835-9711

Association des personnes handicapées - Berthierville sector :
450 836-6877 ou 1 877 736-6877

Volunteer service of D'Au-tray inc. :
450 836-7122 or 450 875-0921 (Lavaltrie)

Centre intégré
de santé
et de services sociaux
de Lanaudière

Québec 

www.cisss-lanaudiere.gouv.qc.ca

Production : CISSS de Lanaudière, juillet 2022
Partial update : March 3, 2025